

aqua[®] cube

LOGiC



CERT 7795
Fully certified to
AS2658:2008



Part No.
COMP825

OWNERS MANUAL

COMPANION



IT IS IMPORTANT THAT YOU READ THESE INSTRUCTIONS CAREFULLY AND UNDERSTAND THE OPERATION & SAFETY FEATURES OF THIS APPLIANCE. FAMILIARISE YOURSELF WITH THE APPLIANCE BEFORE CONNECTING IT TO THE GAS CONTAINER. KEEP THESE INSTRUCTIONS SAFE FOR FUTURE REFERENCE.

YOUR AQUACUBE® INCLUDES:



**GAS
REGULATOR**



**WATER HOSE
AND PUMP**



**12V DC LEAD
AND CIGARETTE
CONNECTION**



AC ADAPTOR



**WATER FLOW
ADJUSTMENT**



**QUICK CONNECT
FITTING**



**SILICONE
HOSE**



**SHOWER
HEAD**



**CARRY
BAG**

UNDERSTANDING YOUR AQUACUBE®

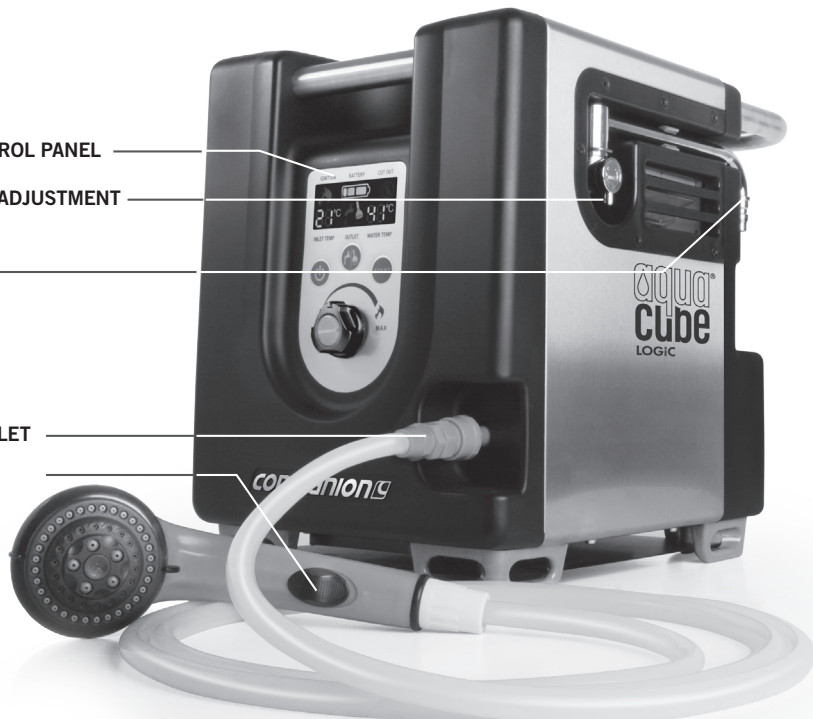
1. DIGITAL CONTROL PANEL

2. WATER FLOW ADJUSTMENT

3. TAP OUTLET

4. SHOWER OUTLET

5. FLOW SWITCH



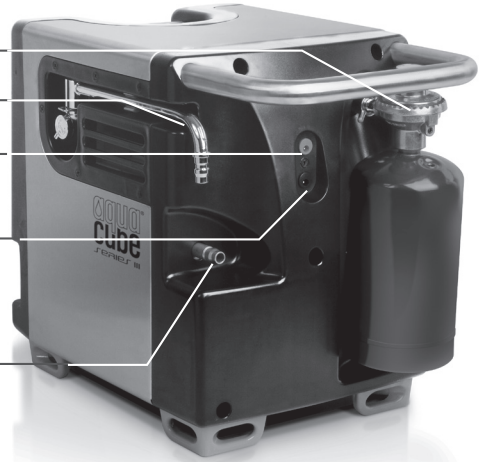
6. GAS REGULATOR

7. TAP OUTLET

8. UNIT POWER INLET

9. PUMP POWER OUTLET

10. WATER INLET



UNDERSTANDING YOUR AQUACUBE® DIGITAL CONTROL PANEL

1. ON BOARD
BATTERY CHARGE
LEVEL

2. BURNER OPERATING

3. INCOMING
WATER
TEMPERATURE

4. OPERATIONAL
OUTLET

5. POWER ON/OFF

6. GAS/TEMPERATURE
GAS CONTROL

7. OVER
TEMPERATURE

8. OUTGOING WATER
TEMPERATURE

9. OUTLET CONTROL

10. PUMP CONTROL





CAUTION



DO NOT: Operate this appliance before reading the instruction booklet

DO NOT: Place articles on or against this appliance

DO NOT: Place chemicals or flammable materials, or spray aerosols near this appliance

DO NOT: Operate with panels, covers or guards removed from this appliance

DO NOT: Operate in an enclosed area without ventilation

DO NOT: Operate in a boat, caravan or tent

IMPORTANT

- This appliance is designed to be used with a source water temperature of 20°C or below
- The maximum temperature lift from the appliance is 25 to 30°C from the source water temperature
- For safety the appliance is designed to shut off the burner when the water temperature from either of the outlets reaches 50°C
- The average run time for the appliance from a fully charged battery is 20 to 30mins before it will require recharging
- The appliance can be operated whilst connected to AC or DC, however the battery will only receive charge when pump is not operating. When the pump is off the battery will receive charge

THIS APPLIANCE IS NOT INTENDED FOR THE SUPPLY OF DRINKING WATER.

THIS APPLIANCE IS INTENDED FOR THE SUPPLY OF HEATED WATER FOR THE PURPOSE OF WASHING AND CLEANING ONLY.

CHECK AND CONFIRM SAFE WATER TEMPERATURE BEFORE USING THIS APPLIANCE.

WATER FROM THIS APPLIANCE MAY BE VERY HOT.

GENERAL WARNINGS

- This appliance shall only be used with the regulator supplied with the appliance and must only be connected to non-refillable 468g disposable Propane Cartridges certified to DOT-39, UN1075.
- This appliance is to be stored in a dry & well ventilated location free from direct sunlight. Do not store when still connected to the cylinder. Make sure that the cylinder is disconnected and is stored in a well ventilated area, free from direct sunlight, heat and ignition sources. If being stored indoors ensure that the location complies with the standard AS/NZS1596.
- This appliance must only be serviced by an authorised service agent, return to your place of purchase for service & repair.

DANGER!

- This appliance is designed for outdoor use only.
- Do not use the appliance if it has a leak, worn, deteriorated or damaged seals.
- Handle with care even after brief use, always pick up using the handle not the cylinder.
- It may be hazardous to attempt to fit other types of gas containers or cartridges.
- Use only in well ventilated areas.
- This appliance shall only be used in an above ground open air situation with natural ventilation, without stagnant areas, where gas leakage and products of combustion are rapidly dispersed by wind & natural convection.
- Do not use adaptors or modify appliance to fit other connectors or cylinders.
- When using this appliance children must be supervised by an adult at all times.
- Never leave appliance unattended when operating.
- Do not use as a cooking appliance or modify for any other reason.

CARBON MONOXIDE HAZARD



- This appliance produces carbon monoxide which has no odour. Using the appliance in enclosed spaces for example, caravan, car, boat or mobile home could cause DEATH.

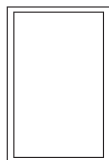
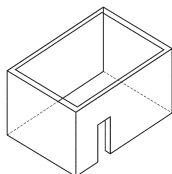
- **OUTDOOR USE ONLY** – The appliance must be used outdoors only and is to be operated no closer than 800mm from the sides and 800mm from above all combustible surfaces, fabrics and flammable materials. Must only be used on solid & stable horizontal surfaces made from non-combustible or non-flammable materials and should be protected from direct drafts and in a well ventilated place.
- **Caution:** Accessible parts may be very hot. Keep young children away.
- Avoid twisting & kinking the Propane gas hose.
- If you smell gas immediately turn the gas off at the cylinder and move the appliance & cylinder to a well ventilated area outside, keeping well away from sources of heat such as naked flames & pilot lights.
- Do not attempt to move or relocate the appliance when it is operating. Extinguish the burner & allow to cool, disengage the gas cylinder then move the appliance.

CHECKING FOR GAS LEAKS

- Check that all connections are tight and that the gas cylinder connection has been tightened before you turn the cylinder gas valve on.
- NEVER check for leaks with a flame or pilot light.
- Using soapy water coat all connections, if bubbles appear turn the cylinder gas control off and retighten the connection before re-testing.
- Inspect the appliance regularly for signs of wear, leaks or incorrect operation. If symptoms such as flaring of the burners, issues with lighting, damages to hoses or connections or leaks from seals or gas controls are identified do not attempt to repair, contact Customer Service on 1300 555 197.
- To check if gas remains in the cylinder, disconnect from the appliance and hold the cylinder in a vertical position then shake from side to side. If there is a sound or a feel of liquid movement inside the cylinder, the cylinder contains gas.
- When changing gas cylinders ensure this is conducted outside in a well ventilated location free from people, animals & ignition sources such as naked flames, pilot lights & electrical equipment with heaters or elements.

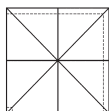
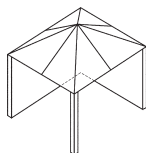
SAFETY INSTRUCTIONS

This appliance must only be used in an above ground open air situation with natural ventilation, without stagnant areas, where gas leakage is rapidly dispersed by wind and natural convection.

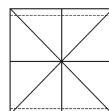
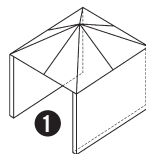


Any enclosure in which the appliance is used should comply with one of the following:

(A) An enclosure with walls on all sides, but with no overhead cover.



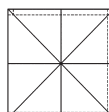
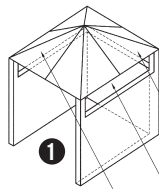
(B) Within a partial enclosure that includes an overhead cover and no more than two walls.



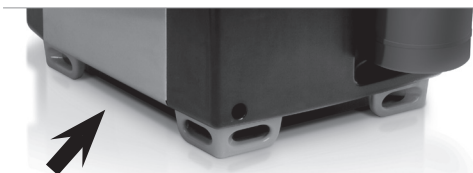
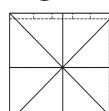
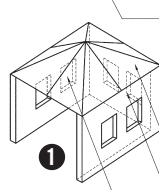
(C) Within a partial enclosure that includes an overhead cover and more than two walls, the following must apply:

(1) At least 25% of the total wall area is completely open.

(2) 30% or more in total of the remaining wall side, back and front wall areas is open and unrestricted.



(3) In the case of balconies, 20% or more of the total wall area must remain open and unrestricted.



Important

During operation ensure that all air inlets & exhausts are kept free from obstructions and closure.

AIR INLET

IMPORTANT – This appliance is designed to be used with a source water temperature of 20°C or below, if the temperature of the outlet water exceeds 45° -50°C the burners will shut off and will only relight once the outlet water temperature falls below 45°C.

This appliance is designed to raise the outlet water temperature by a maximum (average) of 25°C above the source water temperature and can be adjusted by the gas control. In the event that the temperature lift is insufficient, simply run water through the appliance once returning the heated water to the source water reservoir. Run again through the appliance until the desired temperature is reached.

SAFETY FEATURES

This appliance is equipped with the following safety features:

- **Over Temperature Sensor** – the appliance will not allow the burner to remain in operation once the outlet water temperature reaches 45-50°, the burner will automatically relight once the outlet temperature falls below 45°.
- **Water Flow Sensor** – water must be flowing through the system to allow the burner to ignite. In the case that the water supply is restricted or ceases, ie. the Flow Switch is in the “off” position, the burner will be extinguished and will not relight until the water flow recommences.
- **Tilt Switch** – in the event that the appliance is moved during operation or is being operated on an unstable or non-solid surface the appliance will shut down and must be switched off until a suitable surface is located.





SETTING UP

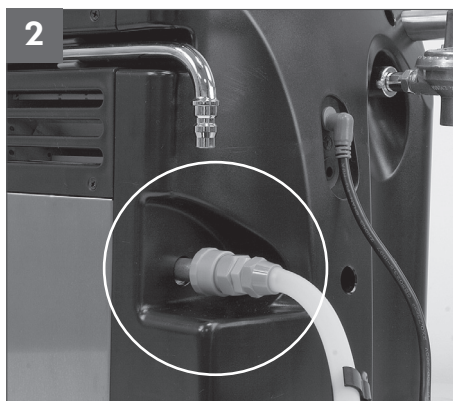
Step 1. Remove all components from the storage bag and place the appliance on a solid, non-combustible surface and straighten out all hoses to remove any kinks or twists.

Step 2. Check that the power switch is “OFF” then connect the pump assembly to the water inlet and the power lead to the outlet marked “PUMP”.

Step 3. Attach the gas cartridge to the regulator by rotating in a “clockwise” direction then attach the regulator to the Aquacube. Check for gas leaks with soapy water – **Do not use a flame.**

If a leak is detected remove the gas cartridge & retighten all connections, then retest.

Step 4. Submerge the pump in a suitable reservoir of water, **DO NOT** use water direct from rivers, lakes or the ocean. **DO NOT** use salt water with this appliance.



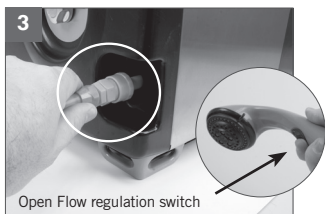


OPERATING THE SHOWER

Step 1. Press the Power Button and the unit will switch on and automatically selects the shower outlet.



Step 2. Check the Battery Indicator to see if sufficient power is available, if not connect to the AC or DC adaptor.

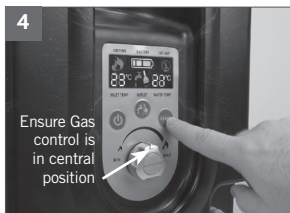


Step 3. Attach the shower hose using the Quick Connect Fitting, and ensure that the Flow Switch on the shower head, is in the "open" position.

Step 4. Position the gas control in the central position, then depress the Pump Button, water will start to flow within a few moments.

Step 5. The electronic ignition should be heard igniting the burner, when lit, the "Flame" icon on the display will illuminate and the outlet water temperature read out will increase.

Step 6. Taking care to measure the temperature of the water from the shower head, the temperature can be adjusted by turning the gas control until the desired level is reached.



Step 7. The water flow can be stopped at any time by sliding the Flow Switch to the "OFF" position, the burner will extinguish and the pump will continue to operate.

Step 8. To reignite the burner, slide the Flow Switch to the "on" position and water will flow from the shower head and the burner will reignite within 5 to 10 seconds.

IMPORTANT – Water remaining in the heat exchanger while the flow is stopped may become hot. When the flow is resumed the user must check the temperature output to ensure that it is suitable and not too hot.



Once the user has finished with the appliance, slide the Flow Switch to the "OFF" position and depress the "PUMP" button to stop the flow of water to the appliance.





OPERATING THE TAP

Step 1. Press the power button and the unit will switch on and automatically selects the shower outlet, depress the “OUTLET” button and the tap icon will illuminate.



Step 2. Check the “Battery Indicator” that sufficient power is available, if not connect to the AC or DC adaptor.

Step 3. Swing the tap away from its storage position and locate towards the side of the appliance and locate a basin or bucket beneath and locate the water flow to the central position.



Step 4. Position the gas control in the “Max” position, then press the “Pump” button, water will start to flow within a few moments.



Step 5. The electronic ignition should be heard igniting the burner, when lit the “Flame” icon on the display will illuminate and the outlet water temperature read out will increase.

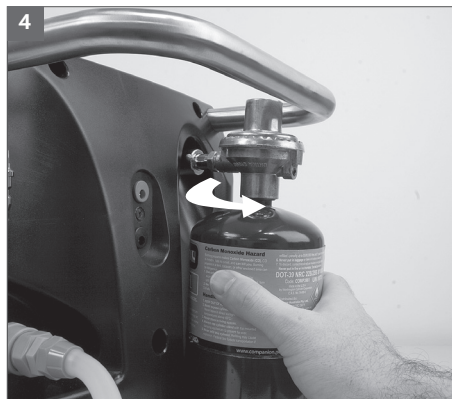
Step 6. The water temperature can be adjusted by moving the the flow valve between “Min & Max” as this will slow or increase the water flow resulting in an increase or decrease in the outlet temperature.





STORING THE APPLIANCE

- Step 1.** Press the "Power" button & turn the appliance off.
- Step 2.** Disconnect all hoses and hold vertically allowing all excess water to drain from them. With the shower head check that the flow regulation switch is in the "ON" position.
- Step 3.** Return the tap to its locked position if being used.
- Step 4.** Unscrew the regulator assembly from the appliance & remove the gas cartridge.
- Step 5.** Tip the appliance towards the back and to one side to drain excess water from the heat exchanger via the water inlet.





APPLIANCE POWER & CHARGING

Step 1. The appliance is fitted with a 12V 2.5A/hr battery pack and can be recharged from either the AC or DC adaptors supplied.

Step 2. To recharge the appliance from either AC or DC the unit must be switched on and the Battery Indicator illuminated.

Step 3. Connect to the power inlet socket at the rear of the appliance and the Battery Indicator will start to flash and move from “Red to Green” confirming that the battery is now charging.

Step 4. AC: Connect the three (3) pin plug to a suitable outlet then connect to the appliance & switch on the AC outlet.

Step 5. DC: Connect the adaptor to the appliance and then connect to a suitable outlet via the cigarette lighter fitting.

- **DO NOT USE – AC to DC converters or modify the adaptors supplied with the appliance.**
- **Charge time from either power source is 4 hours, 50% battery capacity can be reached after 2 hours however to maintain battery life & condition it is recommended that the unit is allowed to charge for the full 4 hours.**
- **IMPORTANT – If the appliance is not being used or is stored it must be recharged every three months to guarantee the battery life expectancy, failure to do so may result in battery failure.**

DISCONNECTING FROM CYLINDER

1. Check that the appliance is fully extinguished, the gas cylinder control valve is in the fully "off" position and all surfaces are cool.
2. Loosen the connection to the gas cylinder in a clockwise direction.

TROUBLE SHOOTING

This guide should be followed in case of failure of the appliance to operate correctly. If symptoms persist contact Customer Service on **1300 555 197**.

 **DO NOT ATTEMPT TO REPAIR OR MODIFY THE APPLIANCE**

PROBLEM	CAUSE
Water will not flow from shower head	Check that appliance is switched on
	Check sufficient water is available
	Check that the pump is connected to the appliance
	Check that adequate DC power is available
	Check DC fuse in cigarette lighter fitting
	Check that the shower flow water regulator is in the open position
Burner will not light	Check that gas cylinder is turned on and that there is gas in cylinder
	Check that the water is flowing from shower head
	Check that the water is not over temperature
Water is not hot enough	Check gas control
	Check source water temperature
	Cycle the water through the system back in to the source reservoir then through the appliance again

CARE INSTRUCTIONS

Using warm soapy water with a mild detergent wipe down all surfaces and areas of the appliance, taking care not to allow water to enter the burner outlets. **DO NOT** submerge the appliance in a sink or bowl. **DO NOT** use abrasive cleaners or bleach.

SPECIFICATIONS

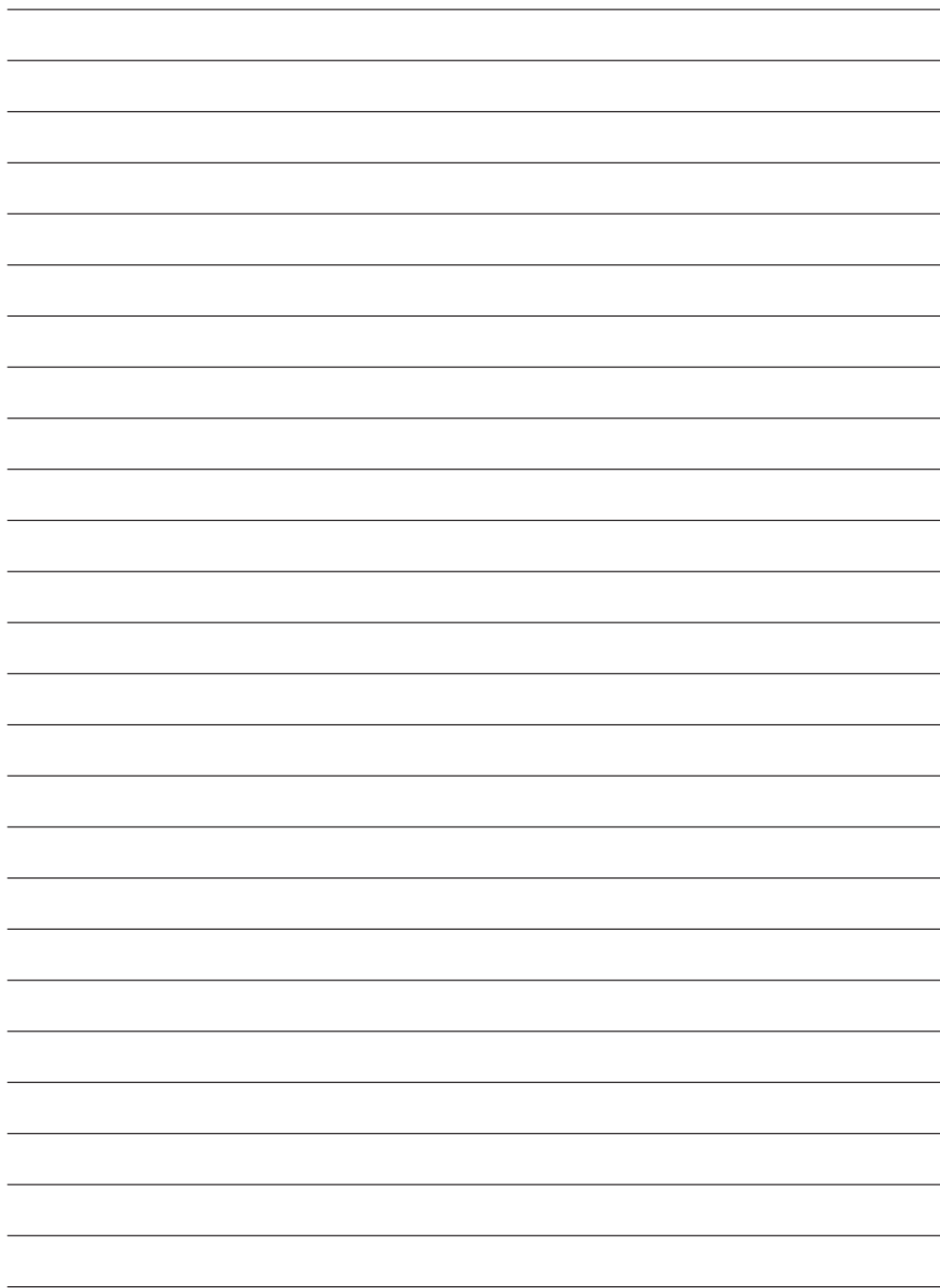
Part No:	COMP825
Water flow:	3 litres per minute (Average)
Inlet voltage:	12V DC - 5A
Size:	422 x 262 x 434mm
Weight:	8.5kg
Injector size:	0.66mm x 4
Consumption:	20.68MJ/hr

ERROR CODES

The appliance is fitted with a number of operational & safety features that can be identified by the following error codes in the event that the unit will not operate:

- E3:** No Flame / Burner not lit
- E6:** Over Temp Shut Off
- E7:** Outlet Water Temp Exceed 48°C
- E8:** Tilt Switch Activated







Companion is distributed by **Primus Australia Pty Ltd** Bundoora Victoria 3083
www.companionleisure.com.au